

# INSTALLATION INSTRUCTIONS

OWS150 / OWS450 / OWS1000

## COMPONENT CHECKLIST

Model	OWS150	OWS450	OWS1000
Main Body & Lid	1	1	1
Primary Filter Bag	1	1	2
Secondary Filter Bag	1	1	1
Retaining Spring Clips	1	1	2
Inlet Tube & Elbow	1	1	1
Sample Jar	1	1	1
Porting Blanks	3	3	3

## PORT MAP - READ FIRST!

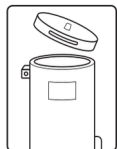
**INLET** (from compressor drains): Connect the facility condensate lines to the black manifold block port.

**OUTLET** (to sanitary drain): Port labeled OUT. Route to an approved facility drain.

**TEST PORT** (front): For the sample tap only. **Do not connect a hose here.**

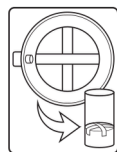
**UNUSED PORTS:** Install the provided Porting Blanks.

## STEP-BY-STEP INSTRUCTIONS



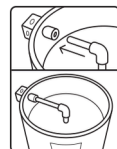
### 1. Remove Lid

Lift and remove the lid from the unit. Do not unscrew or force.



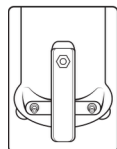
### 3. Insert Retaining Spring Clip(s)

With formed ends facing downward, insert the metal spring clip(s) until they rest evenly atop the primary bag(s).



### 5. Connect Inlet Tube

Inside the unit, push the black tube from the secondary filter bag fully into the IN fitting on the manifold (push-fit elbow) until seated; tug lightly to confirm it's locked.



### 7. Fill & Inspect for Leaks

Check that all fittings are secure before restarting the compressor system.



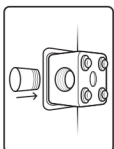
### 2. Install Primary Filter Bag(s)

Insert the white netted filter bag(s). For OWS1000, insert both. Push gently to the bottom without compressing.



### 4. Install Secondary Filter Bag

Place the needle-felt filter bag (with black inlet tube) on top of the spring clip(s).



### 6. Attach Sample Tap

Install the twist-off sample tap onto the test port on the front of the unit.



### 8. Activate Time-in-Service (T-I-S) Indicator

Attach the service life indicator to the lid and press firmly in the center to activate.

## ONGOING MAINTENANCE TIPS

**Quality Testing:** Perform quality testing every two months using the included sample jar and comparator.

**Filter Replacement:** Change filters every 6 months or if the outlet water appears cloudy.

**Discharge Guidelines:** Always discharge to a sanitary drain. Never connect to a storm drain or groundwater.

Follow all local environmental regulations for condensate discharge.

**Important:** If plumbing is adjusted or serviced, **re-verify IN/OUT connections** before restart to prevent bypassing treatment or pressurizing the unit.

**Caution:** Misconnected hoses can discharge untreated condensate or impair operation. Verify port labels before startup.

## LEGAL NOTICE AND DISCLAIMER

The information provided in this document is intended as a general guide for the installation, operation, and maintenance of Joruva Industrial oil-water separators. It is the responsibility of the installer and/or end user to ensure compliance with all applicable local, state, and federal environmental and safety regulations. Joruva Industrial LLC assumes no liability for improper installation, misuse, or failure to follow these instructions. Use of this product in a manner inconsistent with these instructions may result in damage to equipment, property, or the environment and may void the product warranty. Joruva Industrial LLC reserves the right to update this document and its products without prior notice. For the latest documentation, visit [joruva.com/support](http://joruva.com/support).