

SERVICE INSTRUCTIONS

OWS150 / OWS450 / OWS1000

PORT MAP - READ FIRST!

INLET (from compressor drains): Connect the condensate lines to the black manifold block port.

OUTLET (to sanitary drain): Port labeled OUT. Route to an approved facility drain.

TEST PORT (front): For the sample tap only. **Do not connect a hose here.**

UNUSED PORTS: Install the provided Porting Blanks.

ONGOING MAINTENANCE TIPS

Quality Testing: Perform quality testing every two months using the included sample jar and comparator.

Filter Replacement: Change filters every 6 months or if the outlet water appears cloudy.

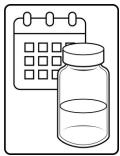
Discharge Guidelines: Always discharge to a sanitary drain. Never connect to a storm drain or groundwater.

Follow all local environmental regulations for condensate discharge.

Important: If plumbing is adjusted or serviced, **re-verify IN/OUT connections** before restart to prevent bypassing treatment or pressurizing the unit.

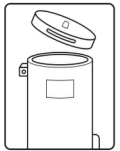
Caution: Misconnected hoses can discharge untreated condensate or impair operation. Verify port labels before startup.

STEP-BY-STEP INSTRUCTIONS



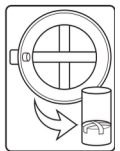
1. Perform Water Quality Test

Open the TEST port sample tap and fill the clear jar to the line. Hold the jar to the frosted comparator strip. If the sample is as clear as (or clearer than) the strip, record on the T-I-S label—no service required.



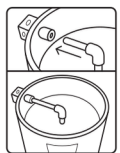
3. Remove Lid

Lift off the lid. Remove and discard the spent primary/secondary filter bag(s) and any used port blanks.



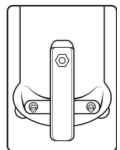
5. Insert Retaining Spring Clip(s)

With formed ends facing downward, insert the clip(s) so they rest evenly across the top of the primary bag(s).



7. Connect Inlet Tube (Unlabeled Port)

Inside the unit, push the black tube from the secondary bag fully into the unlabeled INLET push-fit elbow on the manifold block. Tug lightly to confirm it's locked. ("OUT" and "TEST" are labeled; INLET is the remaining port.)



9. Fill & Inspect for Leaks

Restore flow and check all fittings/ports and the lid seal. Correct any leaks before restart.



2. If Sample Fails — Service & Retest

If the sample is darker/cloudy or shows oil vs. the frosted strip, continue with Steps 3–10 to replace the filter bags. After Step 10, repeat Step 1 and confirm a passing (clear) sample before discharge.



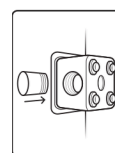
4. Install Primary Filter Bag(s)

Lower the new primary bag(s) into the vessel. For OWS150/450/1000, seat gently to the bottom—do not compress.



6. Install Secondary Filter Bag

Place the needle-filter bag (with black inlet tube) on top of the spring clip(s).



8. Attach Sample Tap

Install the sample tap onto the front TEST port. Do not connect any hoses to this port.



10. Replace & Activate Time-In-Service (T+IS) Indicator

Attach the new T+IS indicator to the lid and press firmly in the center to activate. Record date/time.

Now, return to Step 1 to verify a clear (passing) sample.

LEGAL NOTICE AND DISCLAIMER

The information provided in this document is intended as a general guide for the installation, operation, and maintenance of Joruva Industrial oil-water separators. It is the responsibility of the installer and/or end user to ensure compliance with all applicable local, state, and federal environmental and safety regulations. Joruva Industrial LLC assumes no liability for improper installation, misuse, or failure to follow these instructions. Use of this product in a manner inconsistent with these instructions may result in damage to equipment, property, or the environment and may void the product warranty. Joruva Industrial LLC reserves the right to update this document and its products without prior notice. For the latest documentation, visit joruva.com/support.